

# 4 Bedroom Freestanding To Let in Dainfern Golf Estate



**Nicci Humphreys**  
Principal Property Practitioner  
Registered with PPRA (FFC 202 221 783 2)  
0824920111

nicci@executiveproperties.co.za



**Lara Pretorius**  
0836509044

lara@executiveproperties.co.za



**Gavin Warmback**  
0825646858

gavin@executiveproperties.co.za

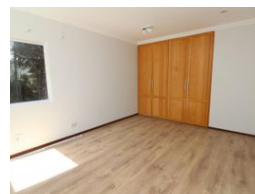
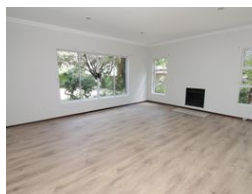
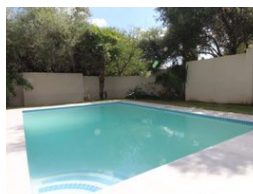
Contact Dainfern

011 4694107

11 Mulberry Hill Office Park  
Broadacres Drive  
Cnr William Nicol Road  
Dainfern



Web Ref RL1273



R65,000 pm

Monthly Levy R4,790

Lease Period 12 months

Availability 01 Aug 2025

Deposit R65,000

Annual Escalation Negotiable



## 4 bedroom family Home in Dainfern Golf EWstate

### DUAL MANDATE

Ideal family home offering 4 spacious bedrooms and 4 bathrooms on the same level. Downstairs is spacious with atrium including a separate formal lounge with fireplace, dining room and family room communicating with the solid wood fitted kitchen. The country style kitchen has a breakfast area, a pantry, gas hob and separate scullery. Downstairs is a separate study/home office and a large covered patio looking onto the garden and pool, 4 tandem garages, staff accommodation. Private walled property. Dainfern is a mature, secure Golf and Residential Estate which has evolved over 1200 home since its inception in 1992. The estate offers an unparalleled lifestyle and recreational experience centered around the Gary Player designed golf course enhanced by nature trails, parks and sports facilities all located in its...

## Features

**Pets Allowed** Yes

**Interior**  
Bedrooms 4  
Bathrooms 4  
Kitchens 1  
Recep. Rooms 3  
Studies 1  
Furnished No

**Exterior**  
Garages 4  
Security Yes  
Dom. Accom. 1  
Pool Yes  
Views False

**Sizes**  
Floor Size 598m<sup>2</sup>  
Land Size 997m<sup>2</sup>



<https://www.executiveproperties.co.za>